



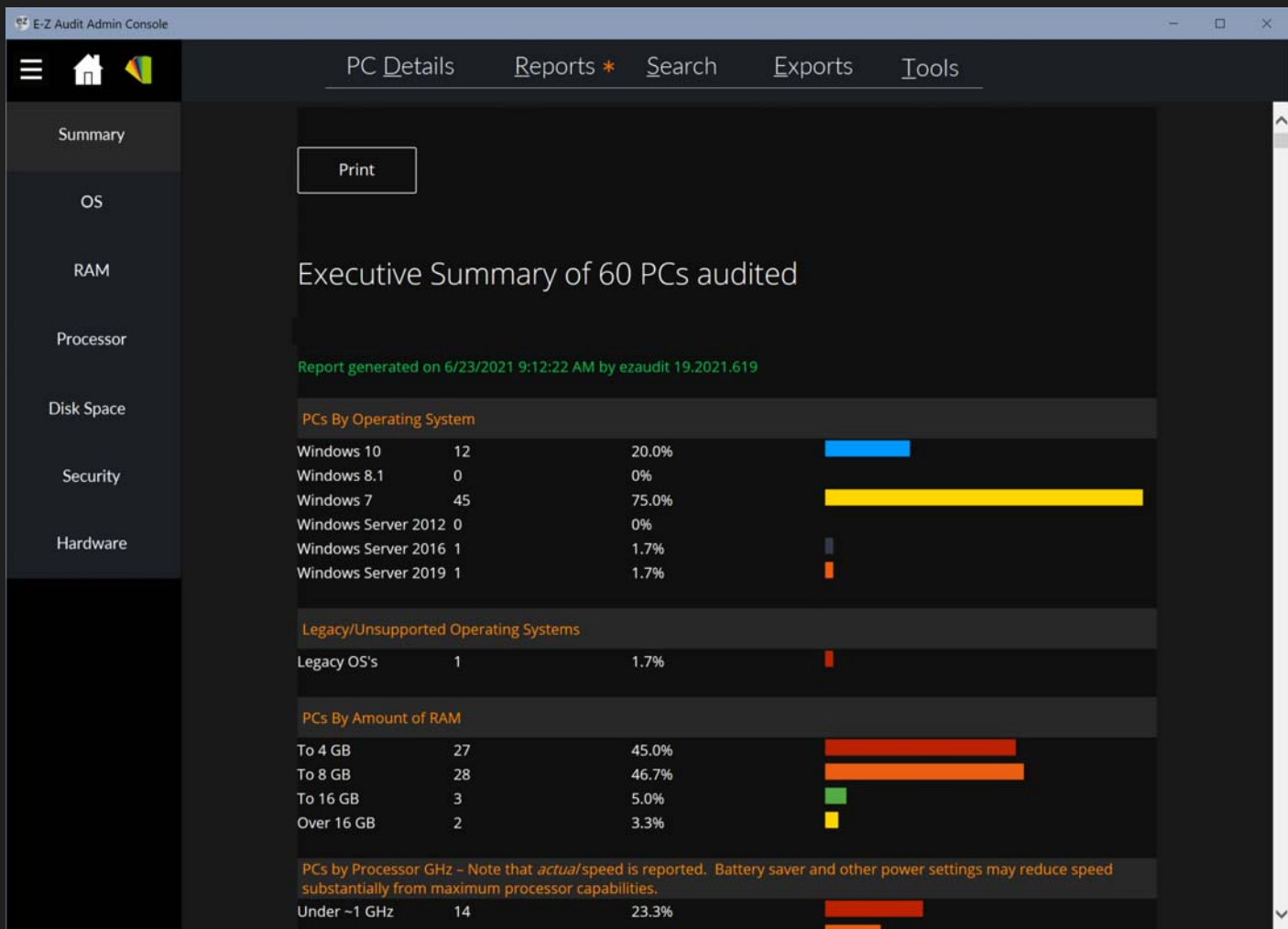
Screenshots of the ezaudit Admin Console

These screenshots highlight some of the many features in the ezaudit Admin Console.

You can view high-level reports, export data to many formats, search for software and much, much more – all point-and-click easy.

You can pick different theme colors in the Admin Console, some of which are shown in the following screenshots.

View summary reports for Operating Systems, RAM, Processor, Low Disk Space, Security Status, and complete Hardware details:



You can search for program files by name, installed software titles, KB updates in one place. Additionally, you can view your Microsoft Office installation in one place:



HTML Export complete

The export has been saved to C:\ProgramData\EZAudit\19\Reports\Master_HTML\

Would you like to view the report in your default browser?

Yes No

TIP: Export via command line

Summary reports to HTML package

Select All

Export this data

- PC Make, Model, Serial Number
- Operating System Info
- RAM
- Processor/MHz
- BIOS
- Network Related Info (NIC,IPs,MAC, etc.)
- Printers
- Video Info
- Sound Info
- Drives and Shares
- Antimalware and firewall info
- Installed Software Titles
- Full Audit program file details (.EXE, etc.)
- Non-program file space consumed
- Note Fields (Admin, User entered, etc.)

PC	User	Audit Date	MAC Address	IPv4	OEM S/N
14:FE:B5:EAD0:681		12/12/2016	14:FE:B5:EAD0:681	129.82.255.153	HQCC1R1
2C:44:FD:69:06:E2		11/1/2016	2C:44:FD:69:06:E2	129.82.107.97	5CB3440G9W
24:B6:FD:FC:6B:95		11/29/2016	24:B6:FD:FC:6B:95	129.82.173.20	87HJGT1
24:B6:FD:FD:DF:AA		4/13/2016	24:B6:FD:FD:DF:AA	129.82.255.202	DXJQGT1
10:60:48:85:2F:99		12/19/2016	10:60:48:85:2F:99	129.82.255.156	MXL3061YFL
F0:1F:AF:05:F4:89		12/1/2016	F0:1F:AF:05:F4:89	129.82.255.202	5YFFX1
D4:BE:D9:A3:2C:F5		12/14/2016	D4:BE:D9:A3:2C:F5	129.82.173.69	HQ7GSP1
8C:70:5A:40:AF:B4		11/10/2016	8C:70:5A:40:AF:B4	192.168.1.30	GLJGT1
40:A8:F0:53:B7:DB		11/28/2016	40:A8:F0:53:B7:DB	129.82.107.133	2UA4331B68
48:0F:CF:3B:7D:B4		11/30/2016	48:0F:CF:3B:7D:B4	129.82.107.188	MXL6122TH4
48:0F:CF:43:3C:70		11/7/2016	48:0F:CF:43:3C:70	129.82.107.189	MXL6122TH3
48:0F:CF:3B:7D:B5		10/18/2016	48:0F:CF:3B:7D:B5	129.82.107.190	MXL6122TH5
48:0F:CF:3B:7D:B7		10/18/2016	48:0F:CF:3B:7D:B7	129.82.107.191	MXL6122TH2
F8:CA:B8:65:62:FE		8/8/2016	F8:CA:B8:65:62:FE	129.82.107.84	DM0JM72



EM S/N

- NGMY32
- XL5201DJ3
- XL2292KGR
- XL5201DJ0
- UA624352L
- 934RF1
- PRQYN1
- HQCC1R1
- 5CB3440G9W
- 87HJGT1
- DXJQGT1
- MXL3061YFL
- 5YFFX1
- HQ7GSP1
- GLJGT1
- 2UA4331B68
- MXL6122TH4
- MXL6122TH3
- MXL6122TH5
- MXL6122TH2
- DM0JM72

Options become available depending on the export type you choose

- Exclude updates and patches from the Installed Software Titles
- Don't export file details for the %WINDIR% folders in the Full Audit File Details
- Export each PC to a separate file using the PC name as the file name
- Open this report when the export completes

Export Open saved reports



PC Details Reports Search Exports * Tools

TIP: Export via command line

PC details to CSV (*.csv)

Select All

Export this data

- PC Make, Model, Serial Number
- Operating System Info
- RAM
- Processor/MHz
- BIOS
- Network Related Info (NIC,IPs,MAC, etc.)
- Printers
- Video Info
- Sound Info
- Drives and Shares
- Antimalware and firewall info
- Installed Software Titles
- Full Audit program file details (.EXE, etc.)
- Non-program file space consumed
- Note Fields (Admin, User entered, etc.)

Export selected data and PCs

Find audits from the list below by any of the column items

Select All

PC	User	Audit Date	MAC Address	IPv4	OEM S/N
10/18/2016		44:A8:42:EC:3D:B0	192.168.153.1	SNGMY32	
12/9/2016		EC:B1:D7:2E:07:C0	129.82.107.19	MXL5201DJ3	
12/12/2016		A0:B3:CC:FE:25:82	129.82.107.11	MXL2292KGR	
12/9/2016		8C:DC:D4:57:D1:BB	129.82.107.182	MXL5201DJ0	
12/12/2016		DC:4A:3E:65:CB:69	129.82.107.153	2UA624352L	
10/24/2016		00:1D:09:35:03:1E	129.82.173.25	7934RF1	
11/8/2016		5C:26:0A:68:93:A9	129.82.107.79	7PRQYN1	
12/12/2016		14:FE:B5:EA:D6:61	129.82.255.153	HQCC1R1	
11/1/2016		2C:44:FD:69:06:E2	129.82.107.97	5CB3440G9W	
11/29/2016		24:B6:FD:FC:6B:95	129.82.173.20	87HJGT1	
4/13/2016		24:B6:FD:FD:DF:AA	129.82.255.202	DXJQGT1	
12/19/2016		10:60:48:85:2F:99	129.82.255.156	MXL3061YFL	
12/1/2016		F0:1F:AF:05:F4:89	129.82.255.202	5YFFX1	
12/14/2016		D4:BE:D9:A3:2C:F5	129.82.173.69	HQ7GSP1	
11/10/2016		8C:70:5A:40:AF:B4	192.168.1.30	GLJGT1	
11/28/2016		40:A8:F0:53:B7:DB	129.82.107.133	2UA4331B68	
11/30/2016		48:0F:CF:3B:7D:B4	129.82.107.188	MXL6122TH4	
11/7/2016		48:0F:CF:43:3C:70	129.82.107.189	MXL6122TH3	
10/18/2016		48:0F:CF:3B:7D:B5	129.82.107.190	MXL6122TH5	
10/18/2016		48:0F:CF:3B:7D:B7	129.82.107.191	MXL6122TH2	
8/8/2016		F8:CA:B8:65:62:FE	129.82.107.84	DM0JM72	

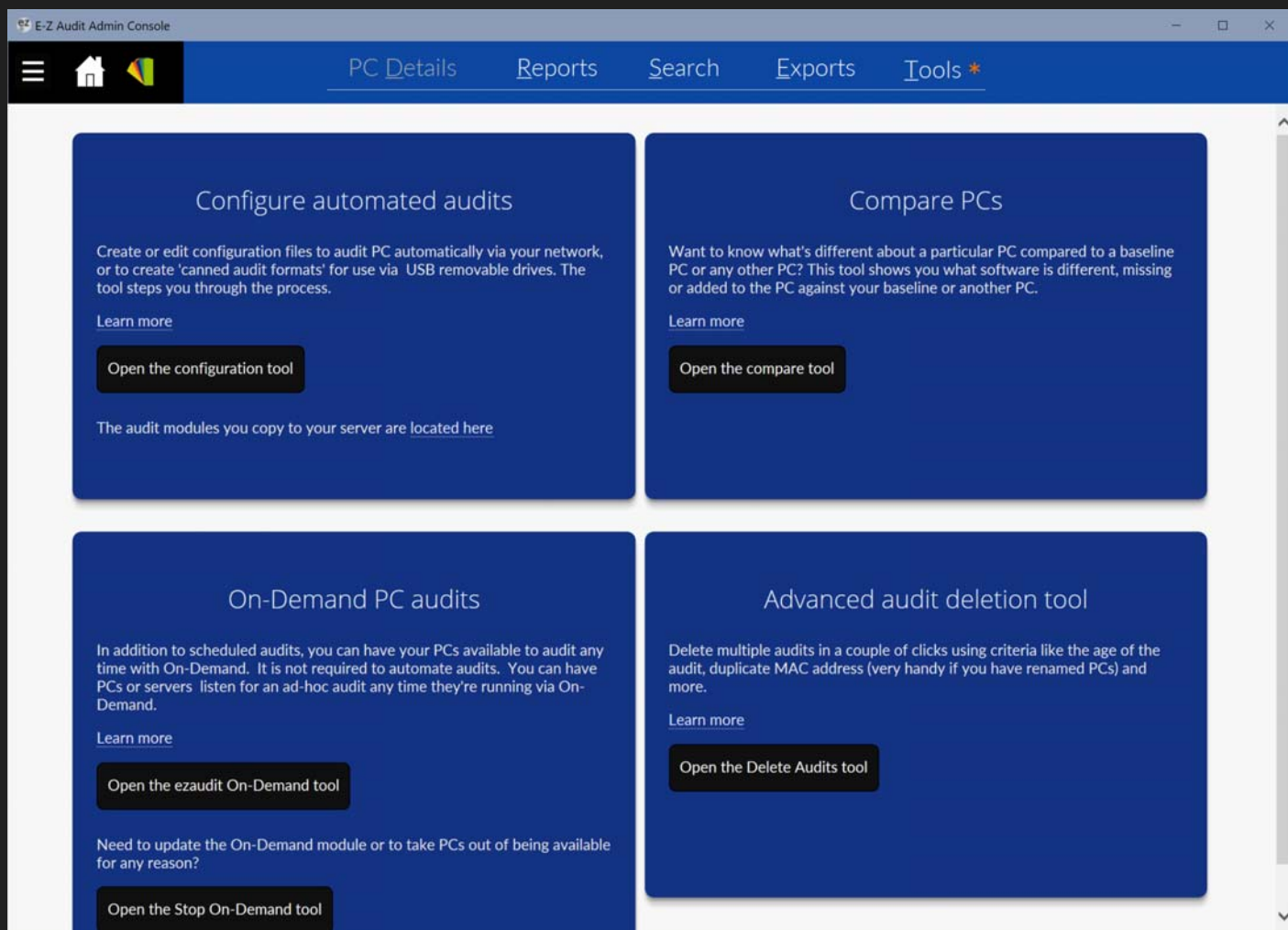


Options become available depending on the export type you choose

- Exclude updates and patches from the Installed Software Titles
- Don't export file details for the %WINDIR% folders in the Full Audit File Details
- Export each PC to a separate file using the PC name as the file name
- Open this report when the export completes

Export Open saved reports

All of your admin tools are easy to find:



A particularly great feature allows you to find variances and discrepancies between any 2 PCs. For example, do two PCs have the same software but different versions (updates)? Compare any PC to a baseline PC. And it's just a click away and takes about 2 seconds.



Compare PCs tool Comparing ADVISOR4 to ADVISOR1

Save [.htm] Print Return to comparison options
[Installed Software](#) | [Unique Files](#) | On Both with different versions

On Both with different versions

File Name	Product Name	Version on ADVISOR4	Version on ADVISOR1	Path
Drv64.exe	64 bit driver installer	1.04.02.00	1.04.01.00	C:\Program Files (x86)\Intel\Intel(R) USB 3.0 eXtensible Host Controller Driver\uninstall\vx64\
iusb3mon.exe	iusb3mon	2.05.00.19	4.00.00.36	C:\Program Files (x86)\Intel\Intel(R) USB 3.0 eXtensible Host Controller Driver\Application\
jhi_service.exe	Intel(R) Dynamic Application Loader Host Interface	9.05.12.1682	11.00.00.1177	C:\Program Files (x86)\Intel\Intel(R) Management Engine Components\DAL\
LMS.exe	Intel(R) Local Management Service	9.05.10.1628	11.00.00.1177	C:\Program Files (x86)\Intel\Intel(R) Management Engine Components\LMS\
PlconStartup.exe	Plcon startup utility	9.05.10.1628	11.00.00.1177	C:\Program Files (x86)\Intel\Intel(R) Management Engine Components\IMSS\
PrivacyIconClient.exe	Intel(R) Management and Security Status	9.05.20.1628	11.00.00.1177	C:\Program Files (x86)\Intel\Intel(R) Management Engine Components\IMSS\
Setup.exe	Intel(R) Installation Framework	1.04.47.00	1.05.31.00	C:\Program Files (x86)\Intel\Intel(R) USB 3.0 eXtensible Host Controller Driver\uninstall\
ncs2prov.exe	NCS2Prov Module	18.01.54.00	20.02.3000.00	C:\Program Files\Intel\NCS2\WMIProv\
PROSetCL.exe	Intel(R) PROSet for Windows* Command Line	18.01.54.00	20.02.3000.00	C:\Program Files\Intel\DMIX\CL\
SocketHeciServer.exe	Intel(R) Capability Licensing Service TCP IP Interface	1.31.08.01	1.42.17.00	C:\Program Files\Intel\CLS Client\
msseoobe.exe	Microsoft Security Essentials Oobe Wizard	4.07.205.00	4.09.218.00	C:\Program Files\Microsoft Security Client\
firefox.exe	Firefox	50.00.02.00	47.00.01.00	C:\Program Files (x86)\Mozilla Firefox\
plugin-container.exe	Plugin Container for Firefox	50.00.02.00	47.00.01.00	C:\Program Files (x86)\Mozilla Firefox\
plugin-hang-ui.exe	Plugin Hang UI for Firefox	50.00.02.00	47.00.01.00	C:\Program Files (x86)\Mozilla Firefox\
crashreporter.exe	{No program description provided by publisher. Search by .EXE file for accurate results.}	50.00.02.6177	47.00.01.6018	C:\Program Files (x86)\Mozilla Firefox\
maintenanceservice.exe	{No program description provided by publisher. Search by .EXE file for accurate results.}	50.00.02.6177	47.00.01.6018	C:\Program Files (x86)\Mozilla Firefox\
updater.exe	Firefox Software Updater	50.00.02.6177	47.00.01.6018	C:\Program Files (x86)\Mozilla Firefox\
wow_helper.exe	{No program description provided by publisher. Search by .EXE file for accurate results.}	50.00.02.6177	47.00.01.6018	C:\Program Files (x86)\Mozilla Firefox\
NvBackend.exe	NVIDIA GeForce Experience Backend	15.03.36.00	10.04.00.04	C:\Program Files (x86)\NVIDIA Corporation\Update Core\
WLMerger.exe	WLMerger Application	15.03.36.00	10.04.00.04	C:\Program Files\NVIDIA Corporation\Update Core\
Skype.exe	Skype	7.03	7.25	C:\Program Files (x86)\Skype\Phone\



Compare PCs tool Comparing ADVISOR4 to ADVISOR1

Save [.htm] Print Return to comparison options
[Installed Software](#) | [Unique Files](#) | [On Both with different versions](#)

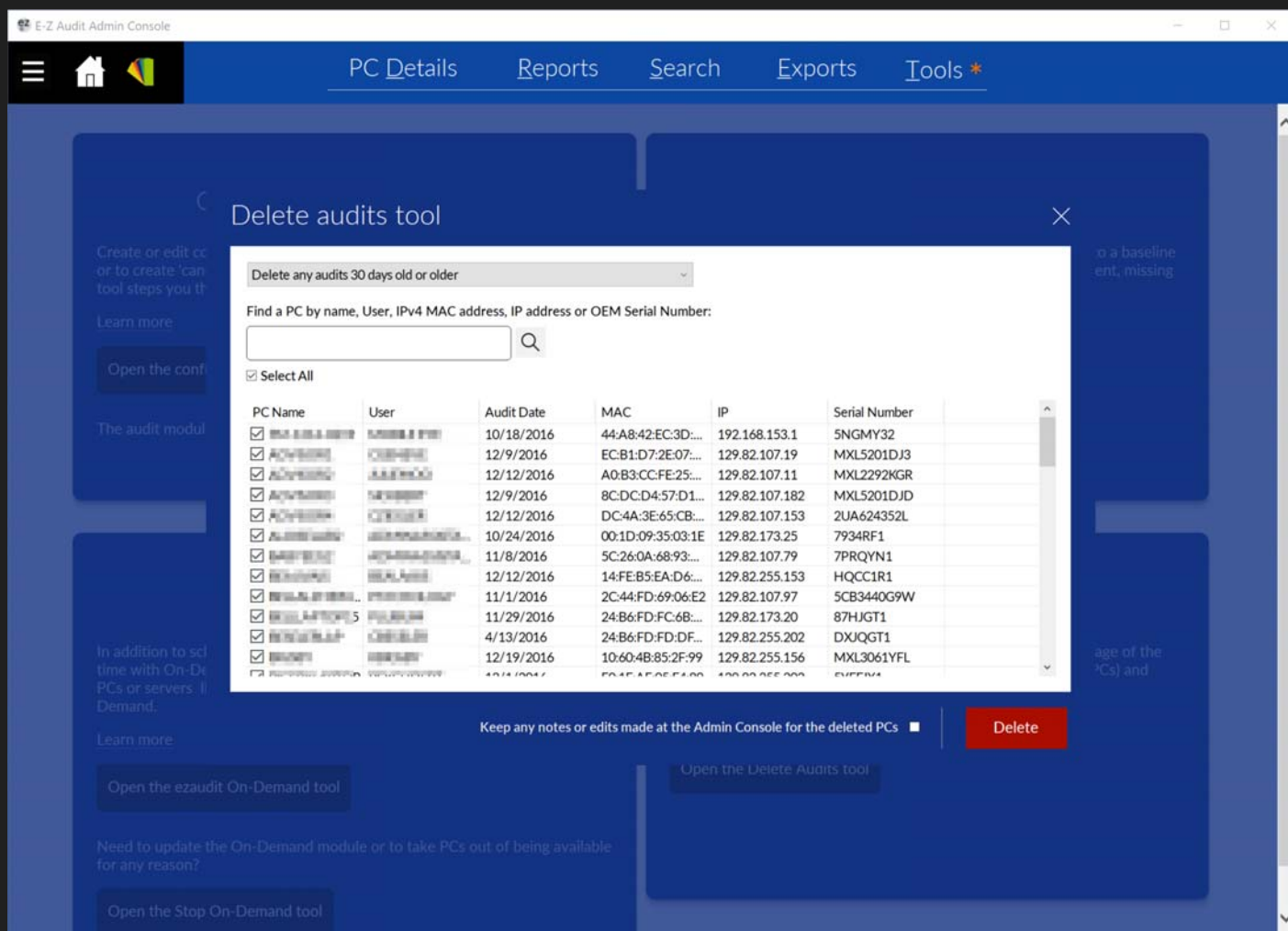
Unique Files on ADVISOR4 (left) not found on Baseline ADVISOR1 (right) - 104

File Name	Product Name	Version	Publisher	Path
3DVision.exe	NVIDIA Package Launcher	1.00.01.00	NVIDIA Corporation	C:\Program Files\NVIDIA Corporation\Installer2\Display_3DVision.(720356FD-4883-41FB-BB5B-D5F800E5E515)\
Acme.exe	{No program description provided by publisher. Search by .EXE file for accurate results.}	13.51.828.00		C:\Program Files (x86)\Common Files\logishrd\LWSPlugins\LWS\Applets\HelpMain\
Adobe AIR Application Installer.exe	Adobe AIR Application Installer	3.01.00.4880	Adobe Systems Inc.	C:\Program Files (x86)\Common Files\Adobe AIR\Versions\1.0\
Adobe AIR Updater.exe	Adobe AIR Installer	3.01.00.4880	Adobe Systems Inc.	C:\Program Files (x86)\Common Files\Adobe AIR\Versions\1.0\Resources\
Adobe Help.exe	{No program description provided by publisher. Search by .EXE file for accurate results.}			C:\Program Files (x86)\Adobe\Adobe Help\
airappinstaller.exe	Adobe AIR Application Installer	3.01.00.4700	Adobe Systems Inc.	C:\Program Files (x86)\Adobe\Flash Player\AddIns\airappinstaller\
airappinstaller.exe	Adobe AIR Application Installer	3.01.00.4700	Adobe Systems Inc.	C:\Program Files (x86)\Common Files\Adobe AIR\Versions\1.0\Resources\
airappinstaller.exe	Adobe AIR Application Installer	3.01.00.4700	Adobe Systems Inc.	C:\Users\vcziegler\AppData\Roaming\Macromedia\Flash Player\www.macromedia.com\bin\airappinstaller\
airappinstaller.exe	Adobe AIR Application Installer	3.01.00.4700	Adobe Systems Inc.	C:\Users\Default\AppData\Roaming\Macromedia\Flash Player\www.macromedia.com\bin\airappinstaller\
atasanot.exe	WebEx Application Sharing Annotation Module	1031.1606.500.2000	Cisco WebEx LLC	C:\ProgramData\WebEx\WebEx\T31_UMC\
atasanot.exe	WebEx Application Sharing Annotation Module	1031.1606.500.2000	Cisco WebEx LLC	C:\Users\All Users\WebEx\WebEx\T31_UMC\
atcliun.exe	atcliun	2800.3106.1604.1401	Cisco WebEx LLC	C:\ProgramData\WebEx\
atcliun.exe	atcliun	2800.3106.1604.1401	Cisco WebEx LLC	C:\Users\All Users\WebEx\
atinst.exe	Broker for Vista	3106.00.2016.624	Cisco WebEx LLC	C:\ProgramData\WebEx\WebEx\T31_UMC\
atinst.exe	Broker for Vista	3106.00.2016.624	Cisco WebEx LLC	C:\Users\All Users\WebEx\WebEx\T31_UMC\
atmgr.exe	Cisco WebEx Service	3100.1100.1609.2300	Cisco WebEx LLC	C:\ProgramData\WebEx\WebEx\T31_UMC\
atmgr.exe	Cisco WebEx Service	3100.1100.1609.2300	Cisco WebEx LLC	C:\Users\All Users\WebEx\WebEx\T31_UMC\
BDSetup.exe	Intel(R) Network Connections	2.11.15.00	Intel	C:\SWSetup\SP72515\

ezaudit cleans up after itself. You never have to deal with any databases to purge, compact or anything else. However there can be times when you want to delete an audit or many audits.

For example, you renamed a bunch of PCs. Find the duplicates by MAC address or Serial Number.

Also, delete audits for removed PCs by audit age:



This is why we've titled ezaudit "PC Audit Software Made Easy" since 2001.

Visit www.ezaudit.net for a free evaluation and more information.

Or contact us:

For Technical questions: support@ezaudit.net

For Sales questions: sales@ezaudit.net