



## E-Z Audit Quick Start Guide

Copyright © 2004-2010 ATConsulting LLC

These materials are provided 'as-is' for informational purposes only.

Neither ATConsulting nor its suppliers make any warranty, express or implied, with respect to the content of these materials or the accuracy of any information contained herein, including, without limitation, the implied warranties of merchantability or fitness for a particular purpose. Because some states/jurisdictions do not allow exclusions of implied warranties, the above limitation may not apply to you.

Neither ATConsulting nor its suppliers shall have any liability for any damages whatsoever including consequential, incidental, direct, indirect, special, and lost profits. Because some states/jurisdictions do not allow exclusions of implied warranties, the above limitation may not apply to you. In any event, ATConsulting and its suppliers' entire liability in any manner arising out of these materials, whether by tort, contract, or otherwise shall not exceed the suggested retail price of these materials.

You can get started auditing via your network with E-Z Audit in just a few minutes! This Quick Start Guide will walk you through the basics. More in-depth and advanced topics are in the User's Guide.

This is what you need to know about getting started:

- Install the E-Z Audit download, ezsetup.msi, to your PC, not your server
- You do not need to install any software to any of your PCs.
- You do not need to install any software to your server.
- You do not need to run any services on either your servers or clients
- All you need is two folders dedicated to E-Z Audit on a server on your LAN, and to add one line to your logon script.

A Troubleshooter is at the end of this document just in case. Most of the time it's a simple oversight that can be quickly corrected.

### Step 1.

Create two folders on a server accessible to your users on your network. For example, let's say your sever has its user folders on the D:\ partition:

Create **D:\ezaudit** and below that **D:\ezaudit\audits**.

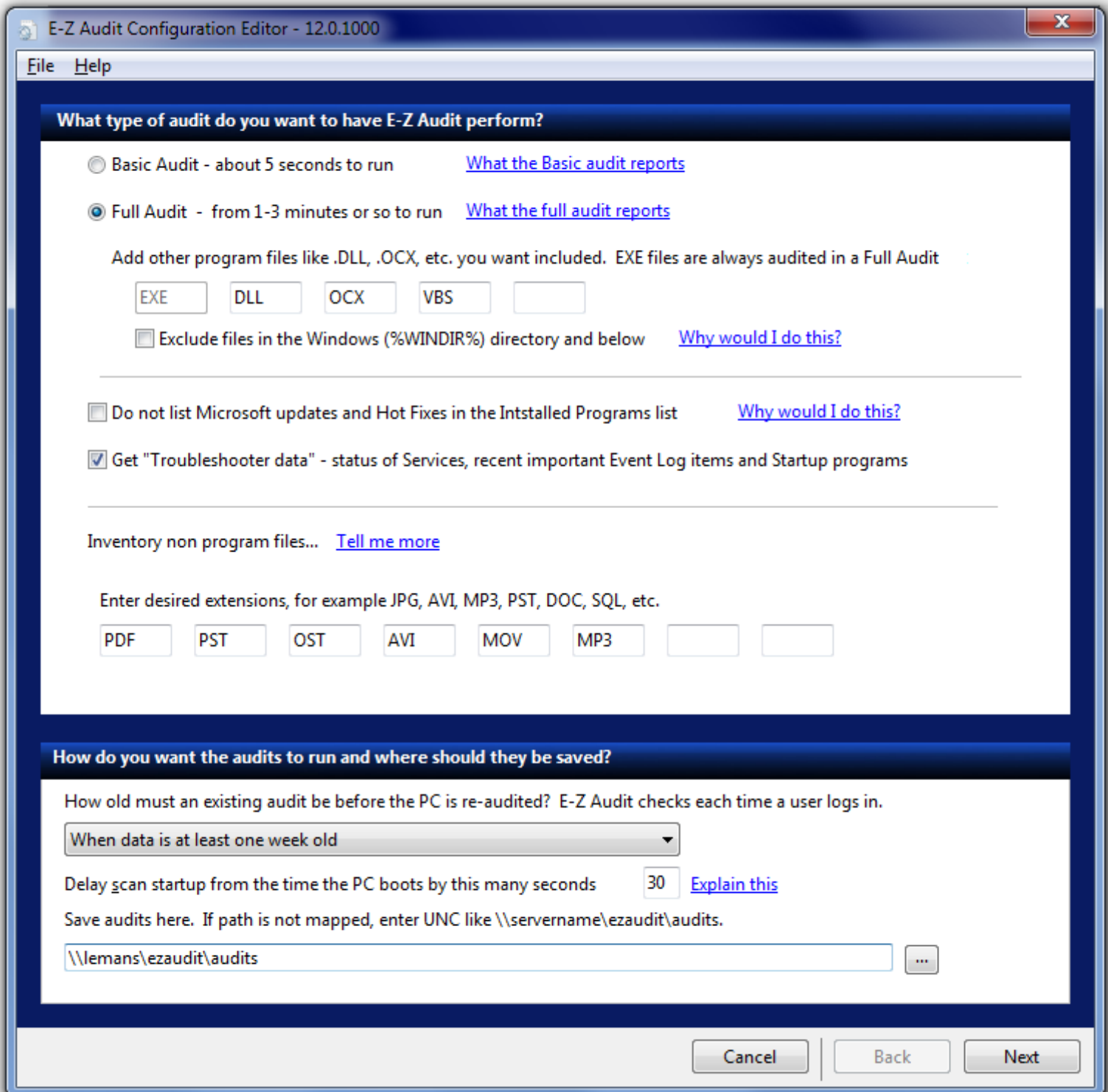
In UNC convention, these become **\\your\_server\_name\ezaudit** and **\\your\_server\_name\ezaudit\audits** from your user's perspective.

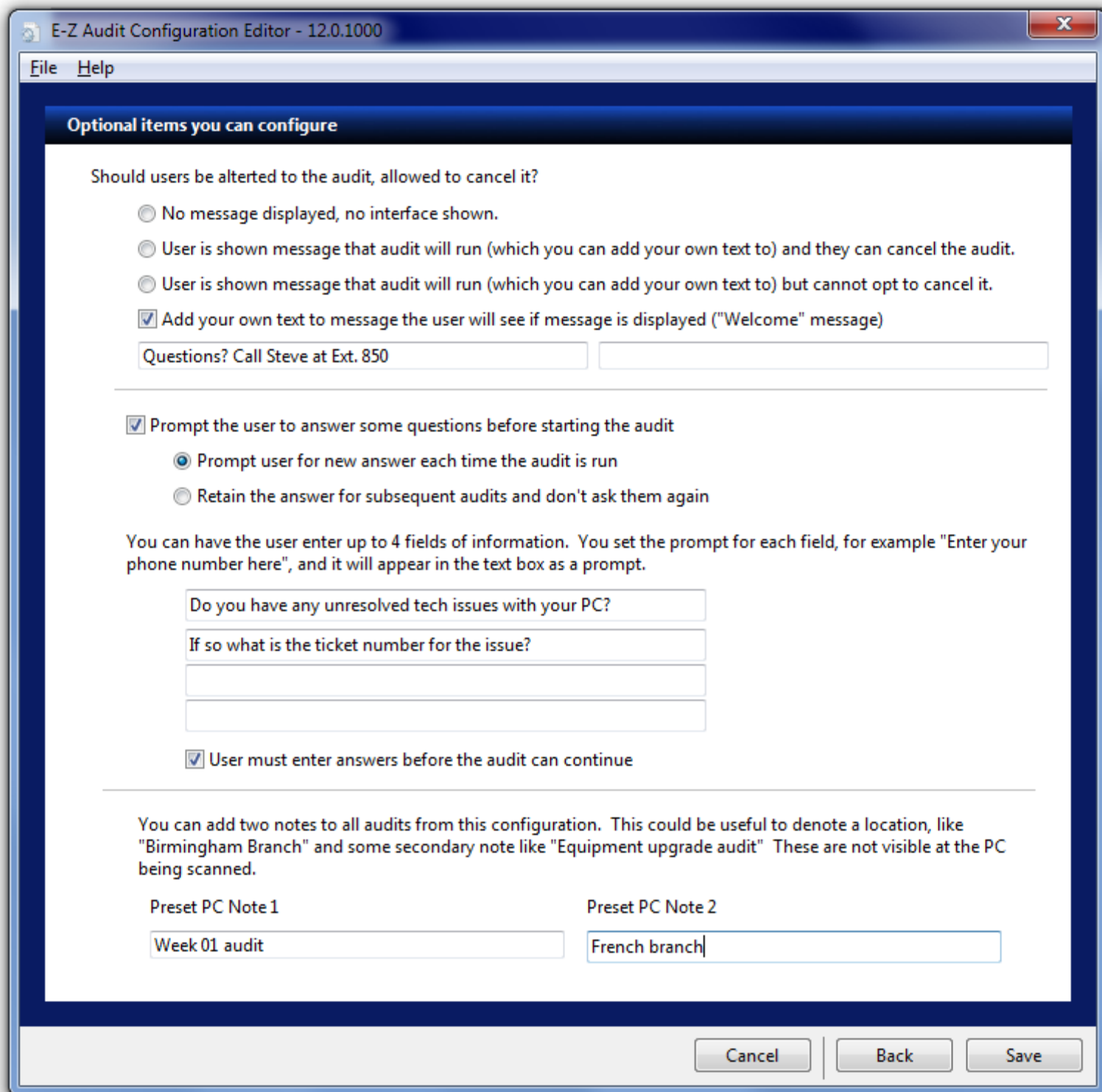
Assign these folders explicit Read, Write, Create, Delete, Modify and Execute permissions (or their equivalents based on your network operating system) to a group that all your users belong to, e.g. Authenticated Users or Domain Users.

Ensure that the folders are not inheriting any "Deny" rules from another folder in the hierarchy.

### Step 2.

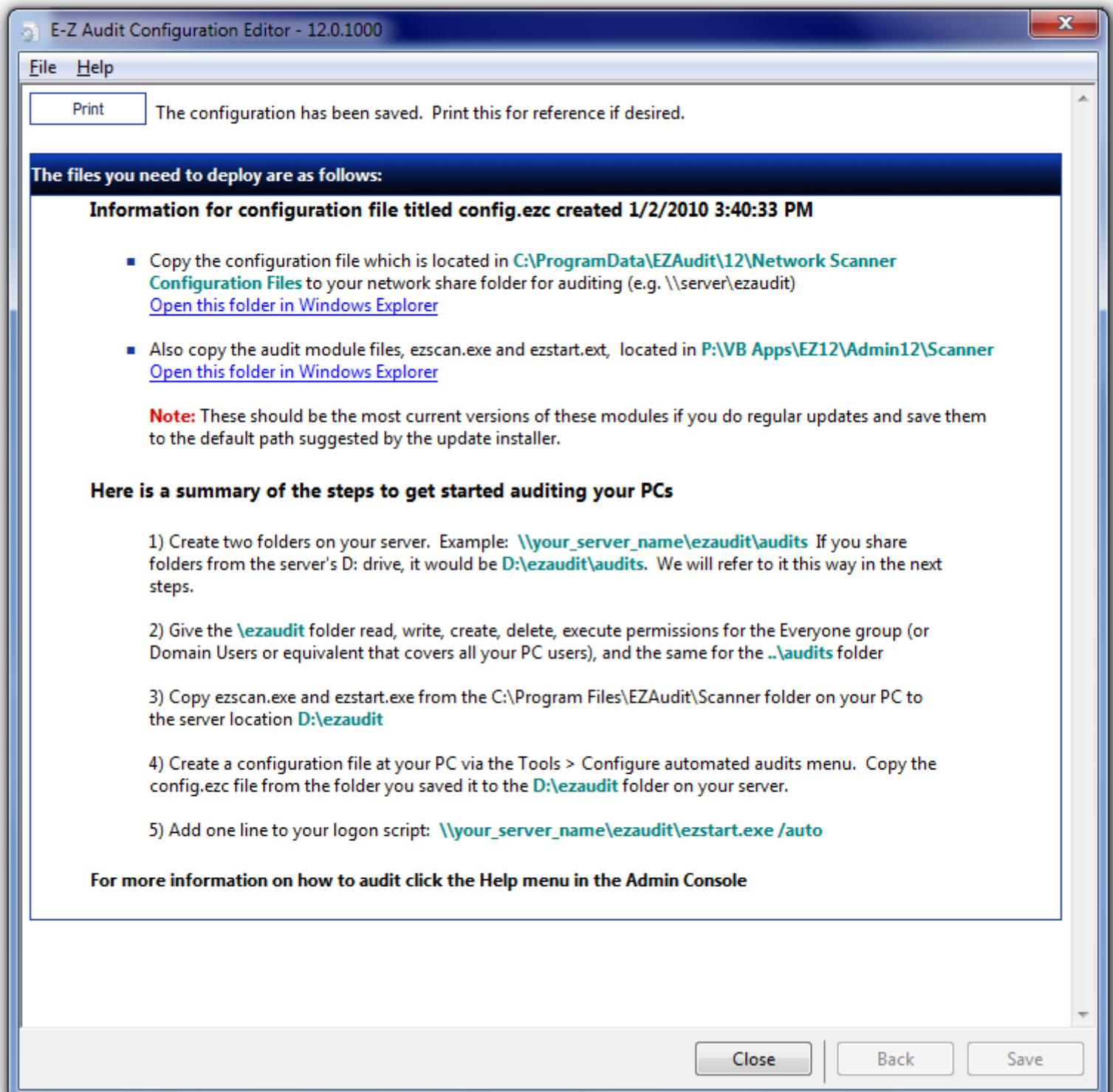
In the E-Z Audit Admin Console – what you installed to your PC – create a configuration file to tell the E-Z Audit Scanner Module what to do. **Access it via the Tools > Configure automated audits menu**





For more information on what your configuration options are, read the User's Guide.

Once the configuration has been saved, you will be advised where the files are that you need to deploy by the configuration tool.



### Step 3.

Add one line to your logon script.

Please understand that we assume our customers are IT professionals with working knowledge of their network operating systems. As such we cannot educate you on how to implement or manage a logon script. Our Troubleshooter for common issues arising when starting out with network auditing covers many network specific issues and should be worked through if you encounter any problems.

The examples below assume you have one configuration file with the default name of config.ezc. You can have more than one configuration at the same time. These [advanced topics](#) are covered in the User's Guide.

#### Logon script commands to use:

First and foremost, some important tips to avoid the most common problems:

- The script must be a **logon script, not a startup script.**
- Assign the logon script for E-Z Audit to the **Users object** and **not the Computers object.**

**If either or both of these are not observed, the audits will not run.**

If you use a simple batch file:

```
"\\your_server_name\ezaudit\ezstart.exe" /auto
```

Assumes one configuration file or if more than one, defaults to config.ezc

```
"\\your_server_name\ezaudit\ezstart.exe" /auto cfg-filename.ezc
```

The cfg- switch tells E-Z Audit to use 'filename.ezc'

If you also want to run E-Z Audit On-Demand add:

```
"\\your_server_name\ezaudit\ondemand.exe"
```

If you ONLY want to run E-Z Audit On-Demand do not launch ezstart.exe and just use the ondemand.exe command line.

**[Learn about E-Z Audit On-Demand in the User's Guide.](#)**

Here is a VBScript example:

```
'Variant declarations to be used by the script
Dim objShell, shellthis, shellcmd

'Start the scripting shell
Set objShell = CreateObject("WScript.Shell")

'First run the core ezaudit module for scheduled audits
'If you ONLY want to run audits on demand, you can omit this section

shellthis = "\\servername\ezaudit\ezstart.exe"
shellcmd = Chr(32) & "/auto"
objShell.Run Chr(34) & shellthis & Chr(34) & shellcmd ,1,False

'This section launches ondemand.exe
'If you only want to audit on demand, you only need this section
'If you do not want to run On-Demand, omit this section

shellthis = "\\servername\ezaudit\ondemand.exe"
objShell.Run Chr(34) & shellthis & Chr(34) ,1,False

'Release the scripting shell
Set objShell = Nothing
```

**If you use third-party tools like KixTart or another NOS, check their support or documentation on running logon scripts. We cannot support other vendors' programs, including Microsoft and have to assume you have familiarity with logon scripts.**

## Troubleshooter for E-Z Audit automated auditing via your network

Fewer than 10% of our users contact us for technical support. Of those that do, the following represent the majority of the questions and solutions.

1. Start by making sure you have the necessary files in the shared E-Z Audit folder on your server. The minimum required for automated audits are: **ezscan.exe, ezstart.exe and one configuration (\*.ezc) file, by default config.ezc**
2. Check that the syntax for launching E-Z Audit is entered correctly. Typos undo the best scripts in the world. Refer to the Quick Start section above, or the User's Guide for examples.
3. Check the permissions for the folders on your server that you are sharing. Examples of what to check and what permissions are both in the Quick Start section preceding, in the step-by-step troubleshooter below and also the User's Guide.
4. Make sure you are using a logon script and not a startup script.
5. Make sure, if you use Active Directory, that you are assigning the script to the Users object and not the Computer object.
6. Look carefully at your logon script if it is a lengthy one and make sure there are no "GOTO" type of statements that send the user past the line where you are launching E-Z Audit.
7. If you are mapping a drive for the audits, make sure you are not un-mapping it after launching E-Z Audit. It will un-map before the audit is saved and so E-Z Audit cannot save to the mapped location. See the step-by-step below for more on this.

One of the above usually is the cause of not getting started right away. For more detailed troubleshooting, please follow the steps below.

**Q:** The audit module won't run from my LAN in from the logon script but I can run the scanner manually.

– **Or alternatively** –

**Q:** The audit module runs from the logon script, but audits are not being saved.

**A:** Check the following items:

- Check the folder on your server where ezscan.exe is located. Is there a file called "errorlog.txt"?

If your users have write permissions to that folder, then errors can be logged to that file.

If it exists, open it in Notepad and see what's being returned. The log items are in plain language and will point you in the right direction to resolve the issue.

The most common problems are:

1. The path you entered when creating the configuration file for E-Z Audit to save audits to isn't a valid path. Open the configuration file with config.exe and see what it says. (The config.exe module is at C:\Program Files\EZAudit\Scanner and can be copied to your server for this sort of in-place editing.)

You should use a UNC such as `\\servername\ezaudit\audits`. A path like D:\ezaudit is not valid as the client PC will not see that as a network drive but a local drive.

2. Are you mapping the shared E-Z Audit folder, e.g. `X:\ezaudit\audits`?

If you map the path and un-map it immediately after launching the audit, the save-to path will have been un-mapped before the audit actually runs. Either leave the mapping in or revert to using a UNC path.

A very bad idea is to map, run the audit, and pause your logon script until ezscan.exe terminates. Your users will be rightly annoyed and blame E-Z Audit even though it isn't any fault of our audit module.

3. The destination is ok, but permissions are not. Check the permissions.

Assuming D: is the drive on your server, these are the folders and permissions:

`D:\ezaudit` - read, write, create, delete, modify, execute

`D:\ezaudit\audits` - read, write, create, delete, modify

4. If you run the audit manually can you actually save the audit when it completes? If you can't them permissions seem the likely cause of the problems.
- If you do not have an errorlog.txt file, can your users write to that folder? Log in as a typical (not as an admin) and attempt to save a Notepad file to the path where ezscan.exe is located. If you cannot save, then users cannot log errors nor write the necessary files E-Z Audit requires.
  - If you have assigned your script via Active Directory, ensure that the script has been associated to the User Object, not the Computer object.

- ❑ The script must be a logon script, *not* a startup script.

**Q:** It just won't run from the logon script.

**A:** It does, so something isn't right with the logon script or permissions, etc. as in the above steps.

Here's a handy way to test your logon script using a program that is so basic, it will run almost anywhere correctly:

Copy "notepad.exe" from your server's C:\Windows\System32 folder to the same folder on your server that ezscan.exe is located in.

Remark out the line that launches E-Z Audit and replace it with one to launch Notepad in a way that causes notepad.exe to read a command switch as well, for example:

```
REM "\\my_server_name\folder_where_scanner_is\ezstart.exe" /auto
```

And add:

```
"\\my_server_name\folder_where_scanner_is\notepad.exe" %test
```

Log into a PC as a typical user. Do you get Notepad opening and asking to create a new file?

If you don't, there are problems running scripts that have nothing to do with E-Z Audit. If you do get Notepad, then the steps in the above section regarding permissions, paths, etc. are likely where the problem lies.

- Did you save your configuration file using spaces in the title? DOS lives even now and it doesn't like spaces. If your file is something like "**some configfile name.ezc**", change it to another name or add underscores, like: "**some\_configfile\_name.ezc**"
- If you have multiple configuration files (\*.ezc), then E-Z Audit will either need to be told which one to use or else if there is one file with the default name of config.ezc, it will use that one. If you are passing the switch to tell E-Z Audit which configuration file to use, note that the switch is cfg- followed by the filename. For example `\\servername\ezaudit\ezstart.exe /auto /cfg-filename.ezc`

You cannot name a file cfg-filename.ezc. E-Z Audit will read the cfg- part of the filename as the switch and look for 'filename.ezc'.