

# ezaudit

## Quick Start Guide

All contents Copyright 2019 ATConsulting LLC

[www.ezaudit.net](http://www.ezaudit.net)

Three steps, less than 10 minutes and you're ready to audit

1. Create a share on a server to run and save audits. For example `\\server\ezaudit\audits`. Give the folders read, write, create, delete, execute permissions to whichever user group you prefer when sharing to your users, for example Domain Users.

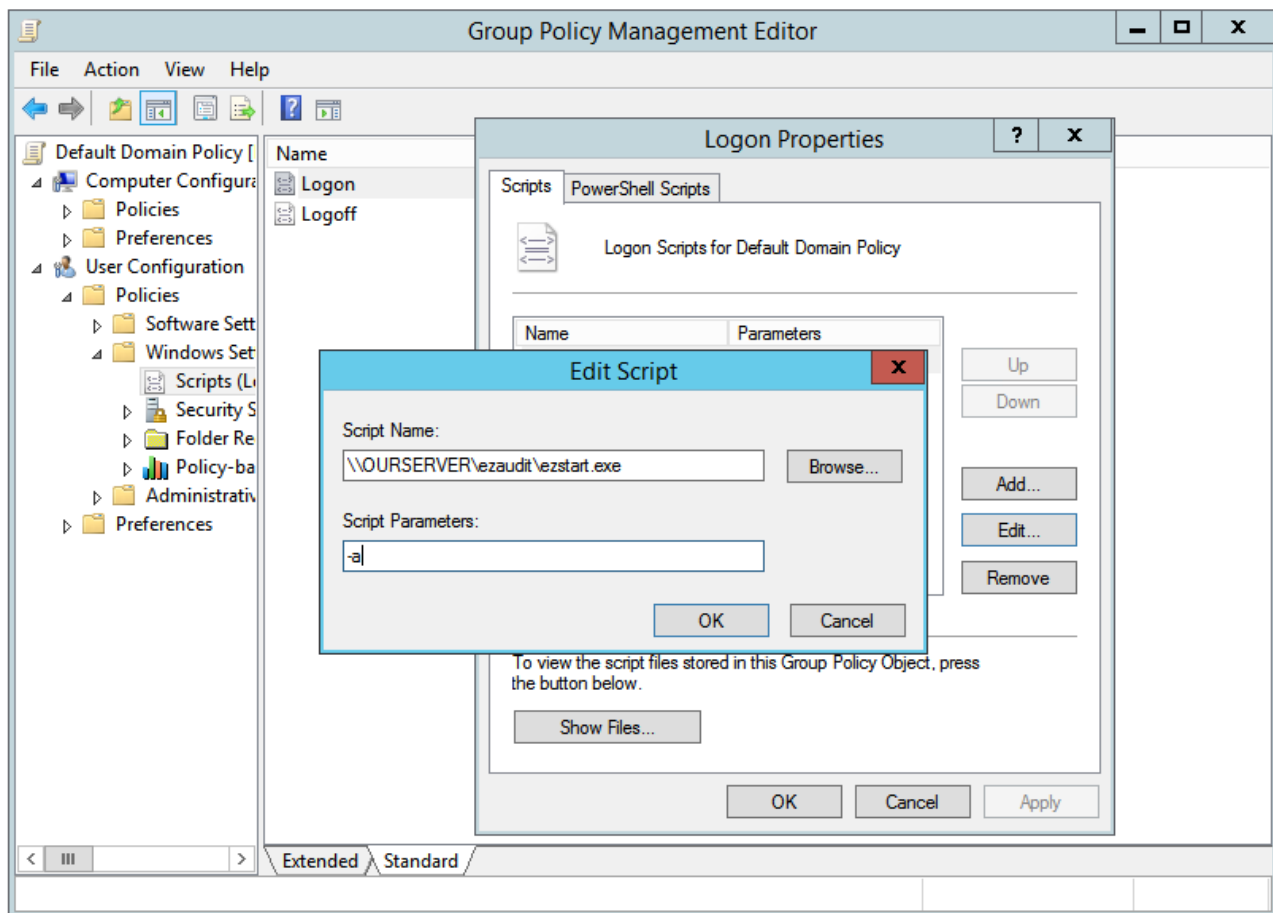
2. Open the Admin Console at your PC and select the Tools menu along the top of the console, then select 'Open the configuration tool'. The tool is 100% point and click easy. Select the audit options you want then save the file to the share you just created under the `\ezaudit` folder. The configuration tool will copy the needed modules to that share.

[Learn more about the various options.](#)

3. Add E-Z Audit to your Group Policy or logon script to launch automated audits. And that's it! Audits will start happening upon your users' next login.

The screen-cap below shows how to add automated scanning to your Group Policy (gpmc.msc).

A script example follows if you use scripting called from GP rather than directly via the Group Policy Management tool.



Here's a VBScript example you can add to your existing logon script:

```
Dim WSHShell
Set WSHShell = CreateObject("WScript.Shell")

shellthis =
"\your_server_name\ezaudit\ezstart.exe"
shellcmd = Chr(32) & "-a
WSHShell.Run Chr(34) & shellthis & Chr(34) &
shellcmd ,1,False
'Note: don't use your server IP address like
\\10.0.0.1\
'Use the server name otherwise Windows will likely
show a security alert at the user's PC.
```

You can learn more about scripting in our [Reference Guide \(PDF\)](#)

[Learn about auditing servers \(PDF\)](#)